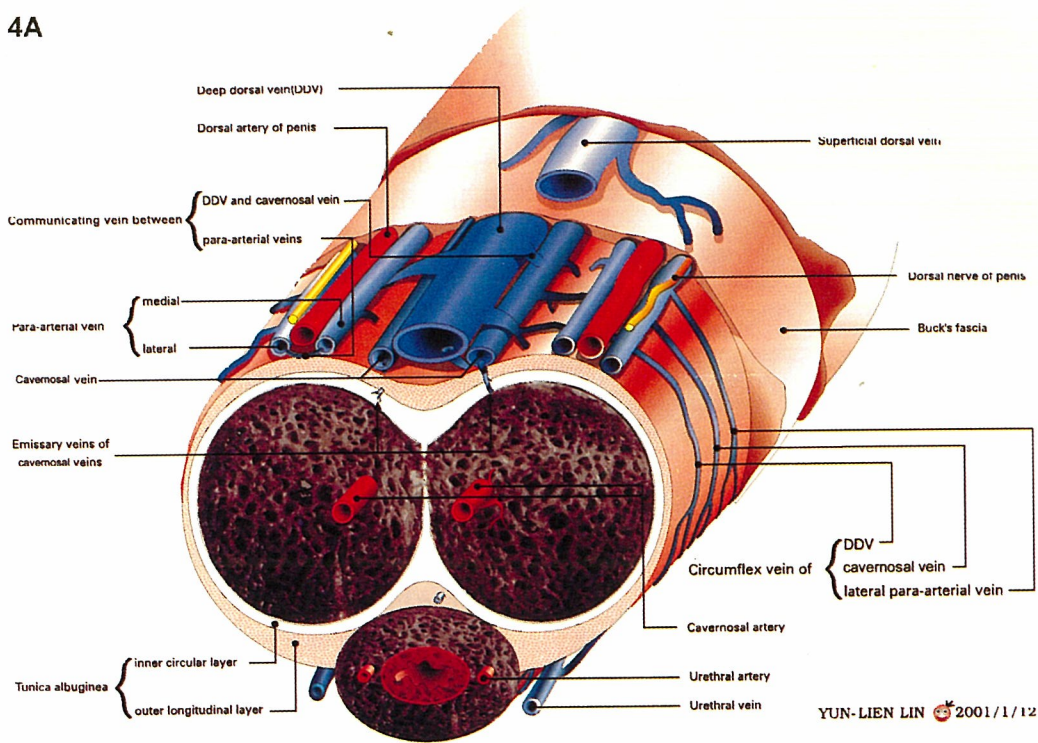


4A



4B

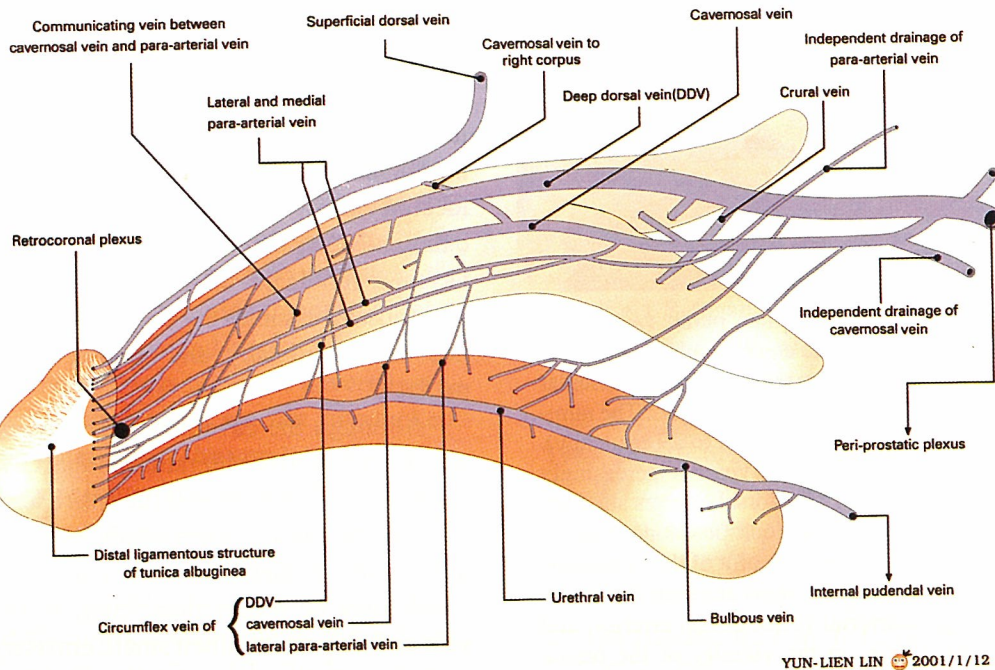


Fig. 4. Schematic illustration of erection-related veins of the human penis. (A) Cross-section of the mid-pendulous portion. The deep dorsal vein, consistently in the median position, receives blood from emissary veins of the corpora cavernosa and from circumflex veins of the corpus spongiosum. It is sandwiched by cavernosal veins, although these lie in a deeper position. Bilaterally, the dorsal arteries are sandwiched by the medial and lateral para-arterial veins. (B) Lateral view. Note that the lateral para-arterial vein merges with the medial one proximally. It then becomes a very tiny vessel (not demonstrated in this illustration) and accompanies the dorsal artery.