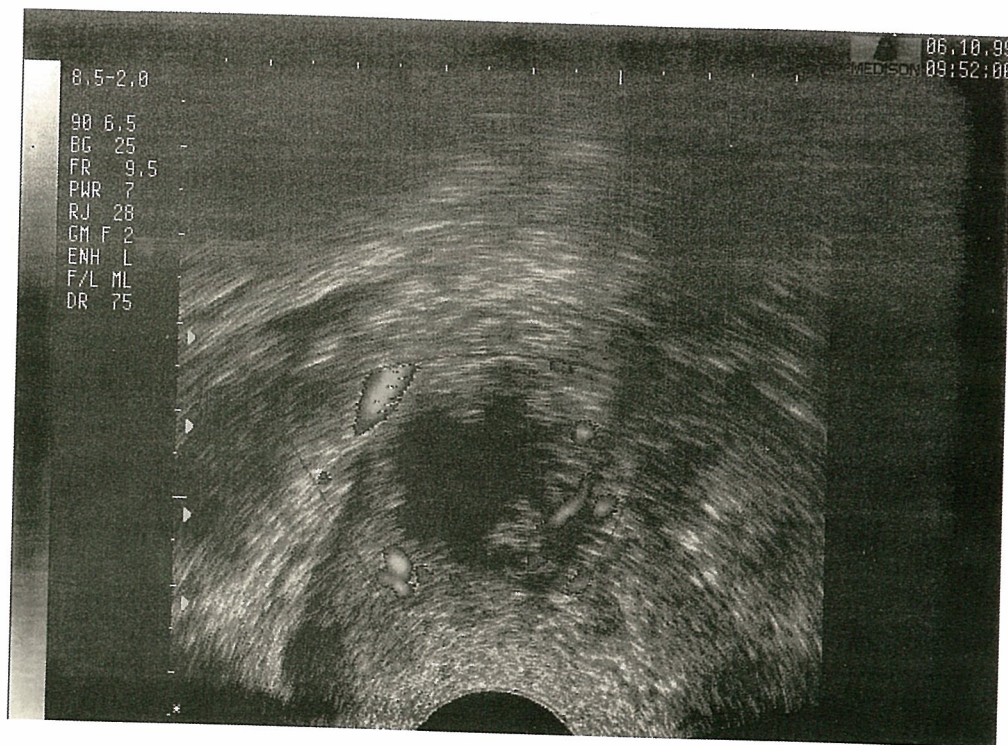


Impressive Image



Cogwheel Sign of Hydrosalpinx

A 30-year-old female with secondary infertility came to our hospital for evaluation of her pelvic condition.

Transvaginal ultrasonography examination revealed a complex right adnexal mass. A cogwheel-like structure can be seen on this cross-sectional view of the fallopian tube with hydropic change. It represents an irregular endosalpinx projecting into the tubal lumen which is distended with fluid. The adherent ovary, recognized by a small follicle, is located at the left lower corner of the picture. Altogether, a tube-ovarian complex is formed by the inflammatory process. Increased vascularity within the inflamed fallopian tube can be demonstrated by Power Doppler ultrasound which indicates the neovascularization in response to the infection.

The introduction of a high-resolution vaginal probe increases the chance of diagnosing fallopian tube disease by ultrasound. The "cogwheel sign" is a characteristic sonographic pattern of an inflamed fallopian tube.

Li-Wei Chien, MD, Henk-Kien Au, MD, Tzung-Chi Sheen, MD, Chii-Ruey Tzeng, MD
Department of Obstetrics and Gynecology, Taipei Medical University Hospital,
©2000, Taipei Medical University, Taipei 110-31, Taiwan