

UCLA



Edwin L. Cooper, Ph.D., Sc.D.

Distinguished Professor, Laboratory of Comparative Neuroimmunology

Department of Neurobiology, Founding Editor-in-Chief: *DCI* 1997 (IF 3.29), *eCAM* 2004 (2.657)

Editor in Chief: JECM (2009)

David Geffen School of Medicine at UCLA

University of California, Los Angeles

Los Angeles California 90095-1763

Tel: (310) 825-9567. Fax: (310) 825-2224. Email: cooper@mednet.ucla.edu. ecam@mednet.ucla.edu

Edwin L. Cooper, Ph.D., Sc.D.

Distinguished Professor, Laboratory of Comparative Neuroimmunology

Department of Neurobiology, Founding Editor-in-Chief: DCI 1997 (IF 3.29), eCAM 2004 (2.657)

Editor in Chief: JECM (2009)

David Geffen School of Medicine at UCLA

University of California, Los Angeles

Los Angeles California 90095-1763

Tel: (310) 825-9567, Fax: (310) 825-2224, Email: cooper@mednet.ucla.edu, ecam@mednet.ucla.edu

Motto: *Fiat Lux* (Latin)

Motto in English: Let there be light

Established: 1919

Type: Public

Endowment: US \$2.299
billion

Chancellor: Gene D. Block

Provost: Scott L. Waugh





Wen-Ta Chiu, MD, Ph.D.

Adjunct Investigator

Center for Health Policy
Research and Development

Taipei Medical University
(TMU), formerly known as
Taipei Medical College
(TMC)

wtchiu@tmu.edu.tw

Thank you. **2009-2010**

On behalf of UCLA Medical School I welcome you.
I am most honored to have been invited for the second time
to the Taipei Medical University.
I am especially pleased to be a member of the TMU family
as the Editor-in-Chief of JECM.

谢谢

我代表 **UCLA** 医学院欢迎你们。
我非常荣幸再次被邀来台北医科大学。
同时特别高兴加入**TMU**成员，担任**JECM**的主编。

Xiexie

Wo daibiao UCLA yixueyuan huanying nimen.
Wo feichang rongxing zaici bei yao lai Taipei yike daxue.
Tongshi tebie gaoxing jiaru TMU cheng yuan, danren JECM zhupian.

Welcome to the Great Family

People in Taiwan believe in an old saying "At home parents are what you need, while leaving home, you need friends." At Taipei Medical University (TMU), we cherish foreign students not only as friends but more like families. Our foreign students from USA, Canada, Japan, and Tuvalu, exchange students, visiting professors, and visiting professionals all agree on it.

During the past 48 years, TMU has devoted to medical education through the efforts of five colleges (College of Medicine, College of Oral Medicine, College of Pharmacy, College of Nursing, and College of Public Health and Nutrition) and Center for General Education. Currently, there are over 6,000 students, 400 full-time faculties, 600 part-time faculties, and almost 30,000 alumni. With the same insistence on the best patient services, all of our three affiliated hospitals with 3,080 beds in total, including TMU Hospital, Wan Fang Hospital, and Shuangho Hospital consider the highest standard of quality as the most important issue. Under the connection of the Global Liaison Center, we have built the partnership with more than 100 world-wide universities, institutes, and hospitals, and the successful experience of TMU has been well-known around the world. Our teaching achievement has been awarded for 3 consecutive years, which was granted by the Ministry of Education, Taiwan. Our affiliated hospitals have not only received numerous awards and certificates, but also been accredited by Joint Commission International (JCI), and recognized as a successful Built-Operate-Transfer (BOT) model with the National Quality Award in Taiwan. Insisting on total quality management not only grants TMU and its affiliated hospitals a remarkable position among medical universities and hospitals in Taiwan, but also agglomerate students, faculties, and hospital staffs all together for the best services to the society and the world.

English Programs offered here are designed for students who are willing to obtain a post-graduate degree in Taiwan. I believe you will be amazed with the professional training, gentle people, colorful but safety living, and profound culture at TMU. As a host, I sincerely welcome you to join TMU, a great family near Taipei 101.

Wen-Ta Chiu

President

Taipei Medical University



*President
Prof. Wen-Ta Chiu*

*Journal of Experimental and
Clinical Medicine (JECM)*
Progress Report
December 2009-2010
Taipei Medical University
January 2011



Outline of Today's Progress Report

1) Purpose of Presentation

2) The First 265 Days

3) Editorials

4) Participation by TMU Professors

5) Participation by Professors Outside TMU

6) Innovations

Cover Photos

Recruiting

7) Role of Editorial Advisory Board and Editorial Board

Need for More Participation

Need to Recruit

8) Listing in Medline

JECM Covers (1-6)

COVER LEGENDS

Improving the Image

- 1) Covers needed drastic improvement after numbers 1 and 2 to give more adequate recognition of space.
- 2) The idea was to create more provocative images than those that focused only on histopathology.
- 3) Note the differences in 1/1, 2/1 and 2/4.

JECM Editorials(1-6)

EDITORIALS

Improving the Image

- 1)The point here was to draw attention to *JECM* and 21st century medicine as well as contributions by focusing on cutting edge research being done in TMU.**
- 2)We wanted to focus on contributions of cutting edge research being done in TMU.**

JECM Past Covers

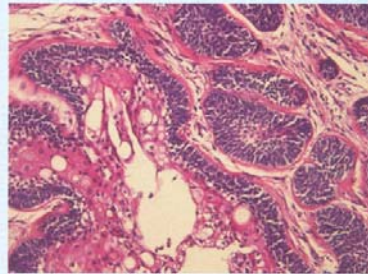


Volume 1
Number 1
December 2009

Journal of Experimental and Clinical Medicine



8 9 10 11 12 13 14 15 16 17 18 19



ISSN 1878-3317

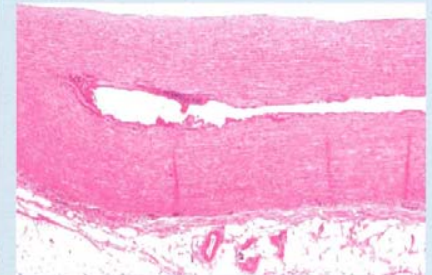


Volume 2
Number 1
February 2010

Journal of Experimental and Clinical Medicine



6 7 8 9 10 11 12 13 14 15 16 17 18 19 20



ISSN 1878-3317

JECM Past Covers



Volume 2
Number 2
April 2010

Journal of Experimental and Clinical Medicine



4 5 6 7 8 9 10 11

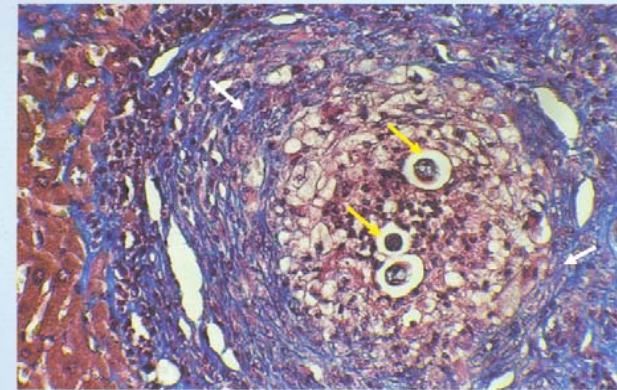
ISSN 1878-3317

Indexed in Chemical Abstracts Service (CAS)



Volume 2
Number 3
June 2010

Journal of Experimental and Clinical Medicine



ISSN 1878-3317

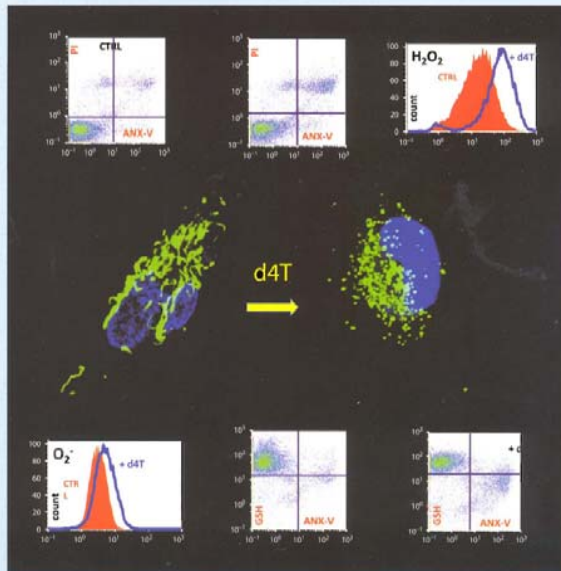
Indexed in Chemical Abstracts Service (CAS), EMBASE, ScienceDirect and SCOPUS

JECM Past Covers



Volume 2
Number 4
August 2010

Journal of Experimental and Clinical Medicine



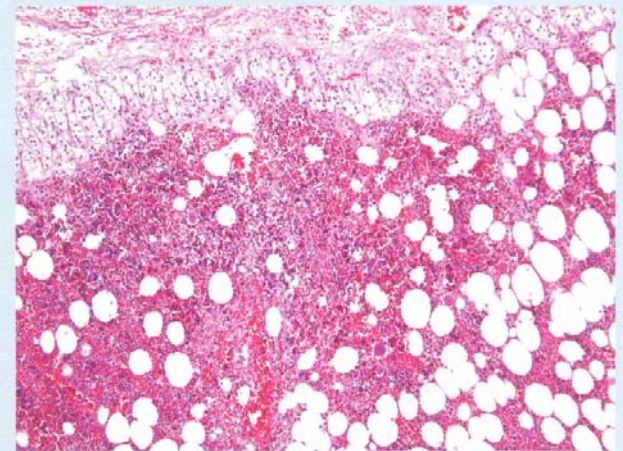
ISSN 1878-3317

Indexed in Chemical Abstracts Service (CAS), EMBASE, ScienceDirect and SCOPUS



Volume 2
Number 5
October 2010

Journal of Experimental and Clinical Medicine



ISSN 1878-3317

Indexed in Chemical Abstracts Service (CAS), EMBASE, ScienceDirect and SCOPUS

Cover

The figure shows that short-term *in vitro* incubation of a human cell line with the antiretroviral stavudine (d4T) provokes alterations in the morphology of mitochondria and in several functional parameters. SW872 preadipocytes constitutively expressing e-GFP LON protease fusion protein were treated with 100 μ M stavudine and cultured for 24 hours.

Note the profound changes in the morphology of spontaneously fluorescent mitochondria that change shape and dimension.

Cytofluorimetric analysis of the same cells revealed, in d4T-treated samples, an increased production of oxygen free radicals (H₂O₂ and O₂⁻), a decrease in the intracellular amount of the antioxidant reduced glutathione (GSH), and an increase of apoptotic cells [i.e., those positive to annexin-V (ANX-V) and propidium iodide (PI)].

Photo provided courtesy of Dr. Andrea Cossarizza, Department of Biomedical Sciences, University of Modena and Reggio Emilia, University of Modena, Italy.

Cover

Adrenal myelolipoma (100x). Residual band-like adrenal cortical tissue in the upper area composed of abundant clear cytoplasm and small round nuclei. Foci of hematopoietic elements, including large megakaryocytes, are present in the hemorrhagic background adipose tissue.

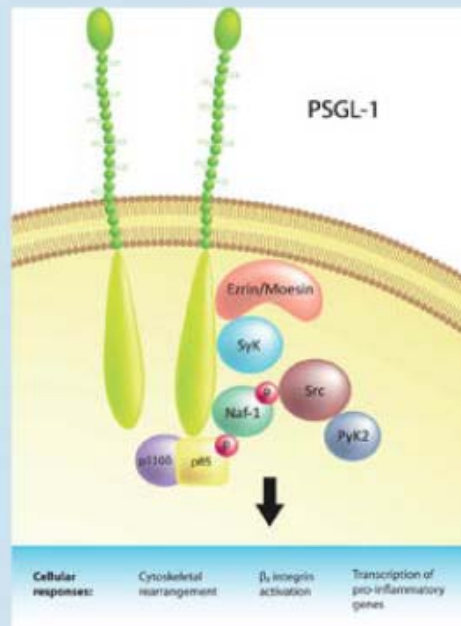


Volume 2

Number 6

December 2010

Journal of Experimental and Clinical Medicine



P-selectin glycoprotein ligand-1

Function

PSGL-1 is expressed on all white blood cells and plays an important role in the recruitment of white blood cells into inflamed tissue.

White blood cells normally do not interact with the endothelium of blood vessels. However, inflammation causes the expression of cell adhesion molecules (CAM) such as P-selectin on the surface of the blood vessel wall. White blood cells present in flowing blood can interact with CAM. The first step in this interaction process is carried out by PSGL-1 interacting with P-selectin and/or E-selectin on endothelial cells and adherent platelets. This interaction results in "rolling" of the white blood cell on the endothelial cell surface followed by stable adhesion and transmigration of the white blood cell into the inflamed tissue.

REVIEW ARTICLE

The Role of Mitochondria in HIV Infection and Its Treatment

Marcello Pinti, Milena Nasi, Lara Gibellini, Erika Roat, Sara De Biasi,
Linda Bertoncelli, Andrea Cossarizza*

J Exp Clin Med 2010;2(4):145–155

Department of Biomedical Sciences, University of Modena and Reggio
Emilia, Modena, Italy

Mitochondria play a dual role in the life of the cell, being capable of producing either energy (in the form of ATP) or potentially dangerous reactive oxygen species (ROS), and they also contain molecules that, when released into the cytoplasm, cause apoptosis. There is a growing interest in the importance of these organelles during the infection caused by the human immunodeficiency virus (HIV), as well as during its treatment. Indeed, several drugs that are capable of blocking HIV can also interact with the enzyme responsible for the replication of mitochondrial DNA and inhibit its activity. Cytokines produced by the immune system can alter ROS production. Furthermore, the virus as such can trigger different mechanisms that interfere with mitochondrial functionality and induce alterations, ultimately causing cell death. As a result, mitochondria can be severely altered by HIV infection and by its treatment

***JECM* Editorials**

Edwin L. Cooper. JECM and 21st Century Medicine. *J Exp Clin Med*. 2009;1(1):3–5

Edwin L. Cooper. JECM and Taipei Medical University: What Are We About?. *J Exp Clin Med* 2010;2(1):1–3

Edwin L. Cooper. JECM: TMU Proteomics Genomics Transcriptomics. *J Exp Clin Med* 2010;2(2):43–46

Edwin L. Cooper, Ph.D., Sc.D. JECM: Moving Forward. *J Exp Clin Med* 2010;2(3):91–92

Edwin L. Cooper. JECM: Some Thoughts on Longevity. *J Exp Clin Med* 2010;2(4):143–144

Edwin L. Cooper. TMU: Tuberculosis at a Glance. *J Exp Clin Med* 2010;2(5):197–199

**Edwin L. Cooper. TMU: Stem Cells. *J Exp Clin Med* 2010.
doi:10.1016/j.jecm.2010.10.001**

Perspectives: Opening the Door to 2011

1) We need higher MS flow.

2) We need much greater participation by Editorial Board Members.

3) We need papers outside of Taiwan.

Thank you for your participation.

谢谢大家来参加。

Xiexie daijia lai canjia.