

臺北醫學大學九十學年度研究所碩士班招生考試題目卷

科目：藥劑學

九十學年度研究所碩士班招生筆記
所別：藥研
考科：藥劑學

題目試卷共 / 張，本試卷為第 / 張

- Q 1. Term explanation (>4%)
Please explain the meaning about following terms
- 1) CMC of surfactant
 - 2) HLB value
 - 3) Excipient
 - 4) Levigation
 - 5) Eutectic mixtures
 - 6) TDM
- Q 2 Tablets are the most popular solid dosage forms in clinical. They usually prepared with the suitable pharmaceutical materials. Please list the types of tablets and their characteristics. (10%)
- Q 3 A drug X give to a patient by various route. The blood concentration and time profile was shown in figure 1 below. Please point out the factors will be considered in each route and how they will be affecting the drug efficiency. (18%)
- Q 4 If you work for new dosage form development department, you will be asked to prepare a product in desired form. Now, you receive 10 gm of compound #1052, pale yellow crystal, $pka= 5.5$, freely soluble in ethyl ether. You are asked to prepare a parental route dosage form. Write down your strategy and thinking process to fulfill this aim. (15%)
- Q5 Define nonlinear pharmacokinetics first. How do the drugs that follow nonlinear pharmacokinetics differ from the drugs that follow linear pharmacokinetics? (15%)
- Q 6 A CNS stimulation drug was intravenously administered in model animals. Small blood and brain fluid were collected at adequate time and obtained the concentration time curve as figure 2 below. You are the professional scientist who was send to analyze these data. How will you start and consider to complete this job? (18%)

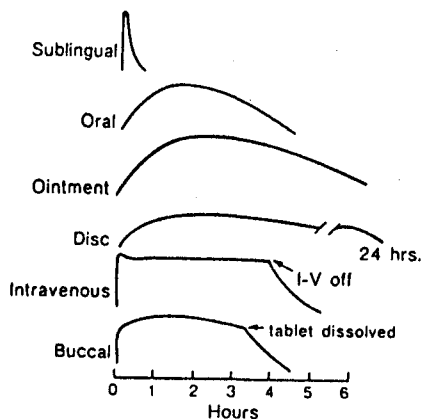


Fig. 1

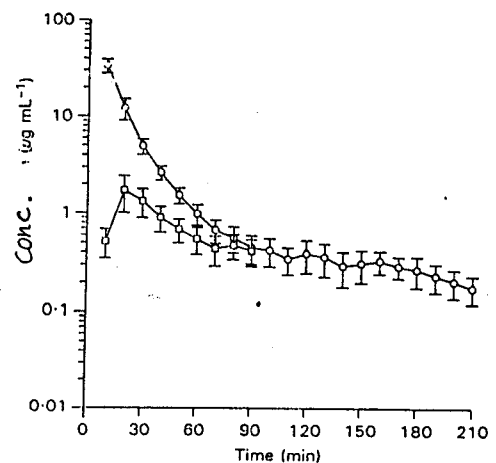


Fig. 2