



Fig. 5. Light microscopy showing proliferation of chondroid tissue at the inner rims of the oval window and the periphery of the stapedia plate during b.0.d. Articular cartilages are connected by the fibrous Stapediovestibular joint (SVJ) (asterisks). The morphologically completed simple Incudostapedial joint (ISJ) is connected by the articular capsule (arrows).

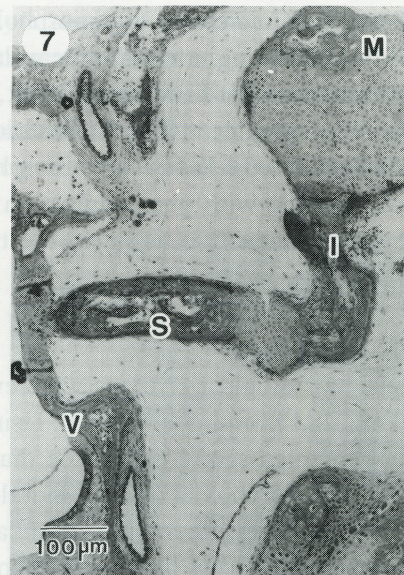


Fig. 7. General view a b.2.d mouse displaying the middle ear cavity containing the ossifying ossicular chain Malleus (M), Incus (I) and Stapes (S). The ossicular chain is connected to the oval window by the Stapediovestibular joint (SVJ), which is composed of articular cartilages and the Annular ligament (AL).



Fig. 6. Extension of endochondral ossification in the ossicles and labyrinth has resulted in thinning of the hypertrophic articular cartilages in a b.2.d mouse. Arrows indicate the characteristic Annular ligament (AL) of the fibrous Stapediovestibular joint (SVJ).

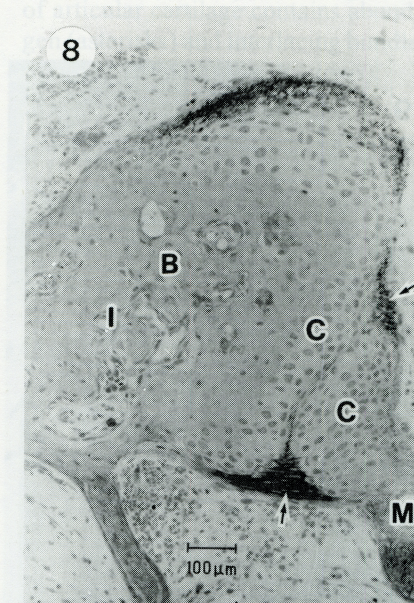


Fig. 8. The auditory ossicles become ossified Osseous tissue (B), leaving the articular cartilages invested by a thin layer of hyaline cartilage Articular cartilage (C) at b.5.d. The mature Incudomalleal joint (IMJ) is connected with the joint capsule containing numerous densely-stained fibers (arrows).