

Fig. 10. Labor delivery recovery suite (LDR).¹¹

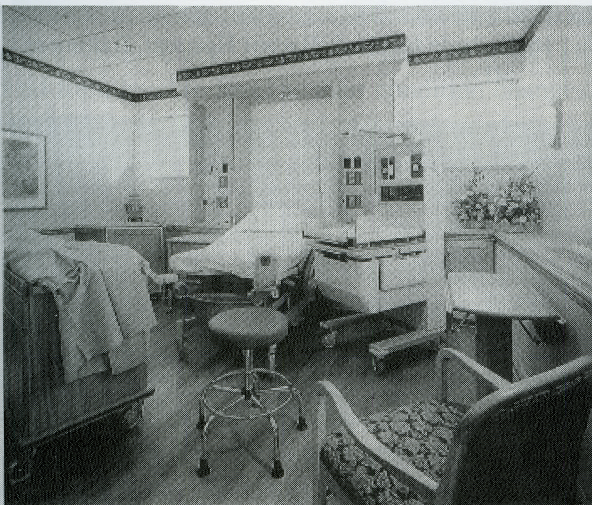


Fig. 11. Labor delivery recovery suite (LDR).¹¹

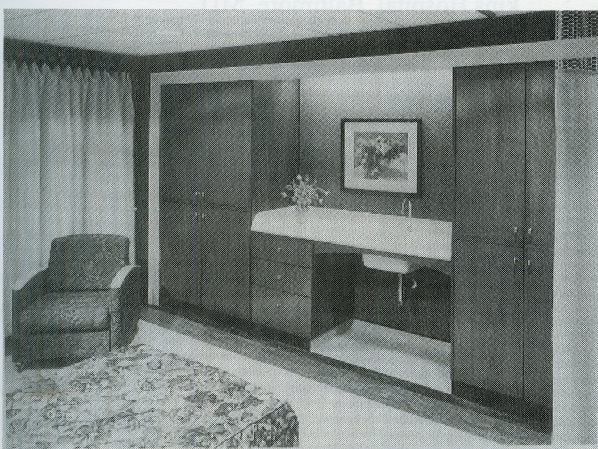


Fig. 12. Labor delivery recovery and postpartum suites (LDRP).¹¹

outside patient rooms. The design rationale for decentralized nurse stations is that nurses will stay longer at a patient's bedside caring for them than at a centralized nurse station. As described above, this also allows the staff to remain closer to patients and eliminates the chatting and loud noises that can occur at a centralized station (Figs. 13-15).

BUILDING E-HOSPITALS

The integration of medical technologies and communication systems means that all future healthcare technology will be interconnected. New information systems will serve as the foundation for telemedicine, clinical decision making, outcomes management, electronic medical record keeping, and the virtual integration of all healthcare providers and hospital de-

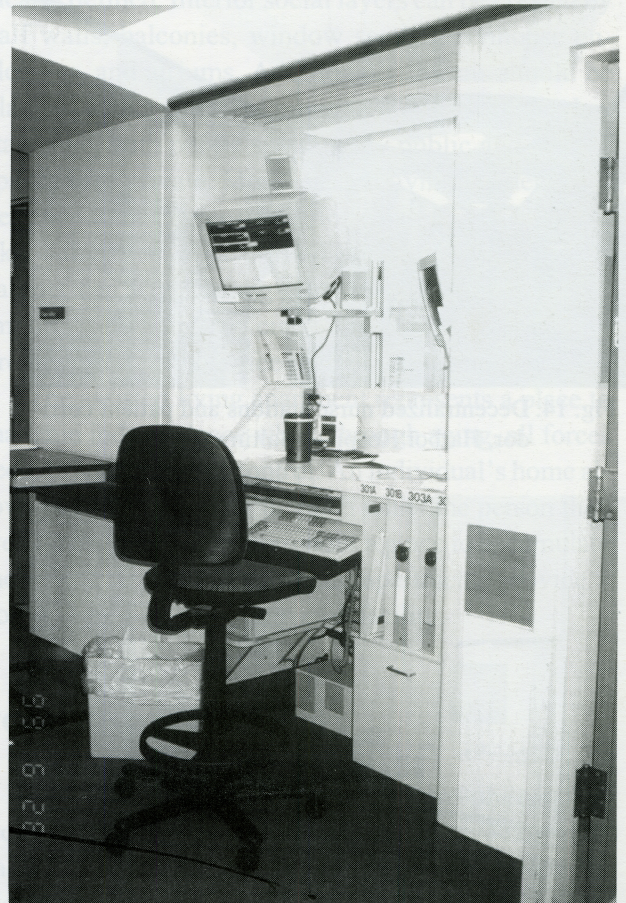


Fig. 13. Decentralized nurse station, Harbor Hospital, Baltimore, MD.