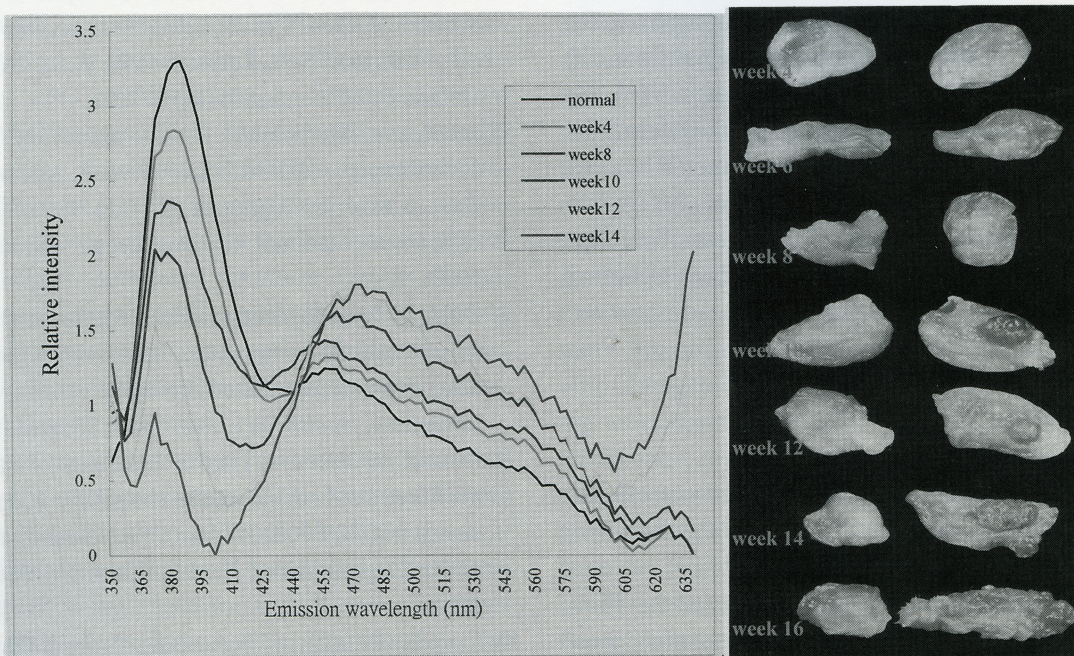


Impressive Image



Fluorescence Spectra of Hamster Buccal Pouch Tissues at Different Stages of Carcinogenesis Under 330-nm Excitation

Morphology of control and experimental buccal pouches at different stages of DMBA-induced carcinogenesis. The left side is the control pouch and the right side is the DMBA-treated pouch of the same individual hamster. It is difficult to tell any difference between the control and experimental pouches at the initial stages based on visual observation. Compared to visual observation, photodynamic diagnosis using fluorescence spectra can be a more sensitive way of determining the progression of oral precancerous lesions.

Chin-Tin Chen, PhD, Tsuimin Tsai, PhD, Chun-Pin Chiang, PhD  
 Center for Optoelectronic Biomedicine, College of Medicine, National Taiwan University,  
 ©2001, Taipei Medical University, No. 1, Section 1, Jen-Ai Road, Taipei 100, Taiwan