

graphy was carried out and showed thin, branching vessels arising from the right renal artery around an avascular suprarenal mass (Fig. 3).

With laparotomy, a large mass was found arising from the right adrenal gland, surrounded in part by a

thin rim of residual adrenal tissue. The mass measured  $11.0 \times 9.5 \times 10$  cm, and demonstrated yellowish-red, fragile, and glistening tissue in gross appearance. Microscopically, it showed a picture of myelolipoma of the adrenal gland composed of mature adipose tissue

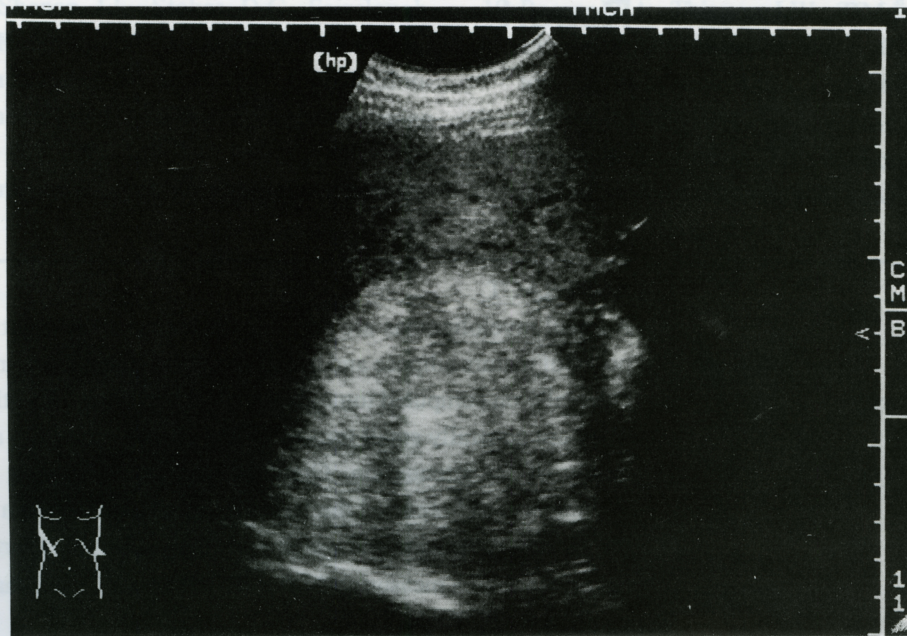


Fig. 1. Abdominal sonography showing a huge hyperechogenic mass above the right kidney.

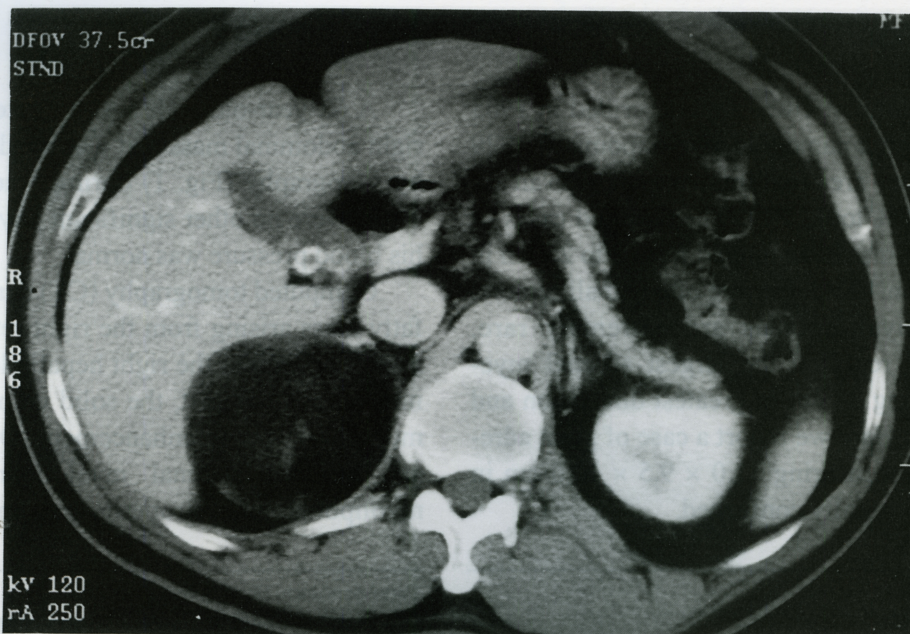


Fig. 2. Computed tomography of the abdomen revealing a large, well-defined low-density mass at the right suprarenal region.